

CERTIFIED LAND CORNER RECORDATION

DESCRIPTION OF CORNER EVIDENCE FOUND, AND ORIGINAL RECORD (If known)

LOCATION

No evidence of corner monument (stone) found. Corner position re-established from fence line evidence as shown in sketch below. Re-established position verified by calls shown on Union Pacific Railroad plans.

S.C.
 S.32 S.33
 S. 5 S. 4
 T.15N.,R.63W.
 T.14N.,R.63W.
 6th P.M.

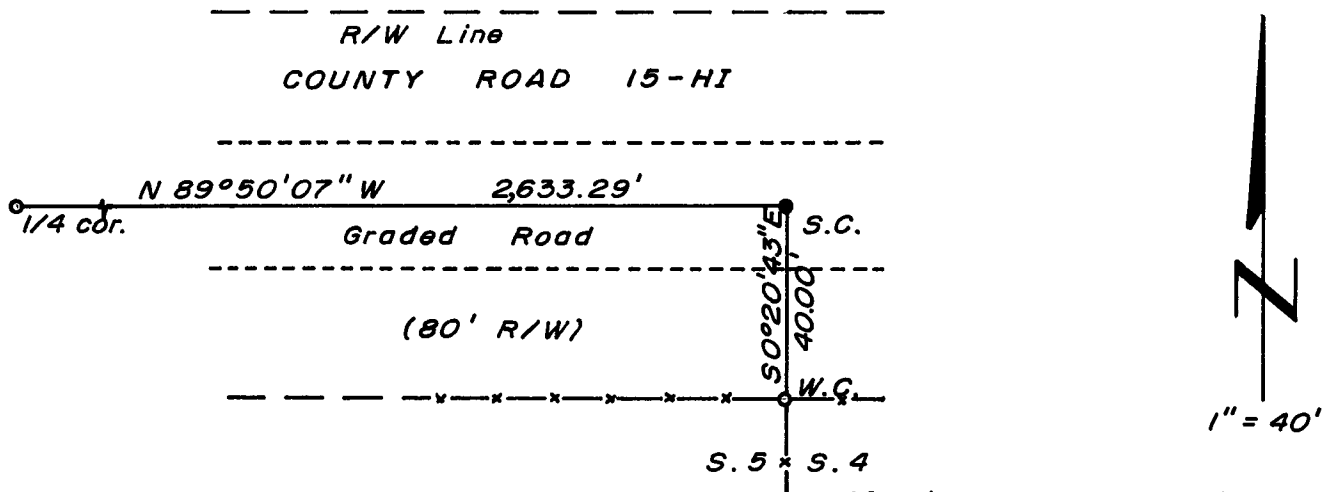
DESCRIPTION OF MONUMENT AND ACCESSORIES ESTABLISHED TO PERPETUATE THE ORIGINAL LOCATION OF THIS CORNER:

At the corner: Set a 5/8" dia. x 24" long rebar with 2" dia. aluminum cap, 6" below surface of graded road.

Accessories: A 5/8" dia. x 24" long rebar with 1 1/2" dia. aluminum cap, stamped "WC 40 FT, LS 519, 1978", bears S 0° 20' 43" E (on section line), 40.00 feet distant.

SKETCH, WITH COURSE AND DISTANCE TO ADJACENT CORNER IF DETERMINED IN THIS SURVEY.
 (May Sketch or Paste Reproduction on Reverse Side.)

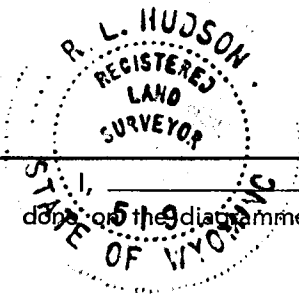
Basis of Bearing - By solar observation, 1/2 mile west.
 Distances based on measurements by electronic means.



Aluminum cap stamped:

T.15N. R.63W.
 S.C.
 S.32 S.33
 S. 5 S. 4
 T.14N.

LS 519 1978



I, R.L. Hudson certify that I have carefully performed ~~or reviewed~~ the work done on the diagrammed corner as reported on this recordation form and approve the same.

R.L. Hudson Wyoming L.S. No. 519
 Signature of Surveyor Registration No.

STATE OF WYOMING,
 Office of Clerk and Recorder,
 County of Sarassee

This "corner record" was filed for record on the 19 day of June, 1978, was noted on the cross-index plat and is assigned page No. _____, in book No. _____.

Janet C. Withead
 County Official

Cross Index No.	T. _____	R. _____	Mer.
<u>A 9</u>	T. <u>14</u>	R. <u>63</u>	Mer.
<u>Z 9</u>	T. <u>15</u>	R. <u>63</u>	Mer.
_____	T. _____	R. _____	Mer.
_____	T. _____	R. _____	Mer.
_____	T. _____	R. _____	Mer.
_____	T. _____	R. _____	Mer.